





Mercedes 722.0, 722.1 (W3A-040, W4B-025)

Ref: MC-3	11.25", 1.375" Dia. Welded Pilot		
MB27	1972-80 350, 450		
	Code: 115 250 1702 (Some)		
	Type: Non Lock Up	Hub: Ears	
	Diameter: 11.25"	Input Splines: 22	
	Bolt Circle: 9"	Two Holes per Pads	
	Mounting: 3 Pads	Pilot Dia: 1.375"	


Ref: MB35	11.25", 1.375" Dia. Molded Pilot		
MB35	1972-80 300 Series		
	Code: 123 250 0102, 1.375" Long Pilot		
	Type: Non Lock Up	Hub: Ears	
	Diameter: 11.25"	Input Splines: 22	
	Bolt Circle: 9"	Two Holes per Pads	
	Mounting: 3 Pads	Pilot Dia: 1.375"	


Ref: MC-8	11.25", 1.375" Dia. Welded Pilot		
MB34	1972-80 300 Series		
	Code: 116 250 1002, 1.5" Long Pilot		
	Type: Non Lock Up	Hub: Ears	
	Diameter: 11.25"	Input Splines: 22	
	Bolt Circle: 9"	Two Holes per Pads	
	Mounting: 3 Pads	Pilot Dia: 1.375"	


Ref: MB36	11.375", 1.375" Dia. Welded Pilot		
MB36	1972-80 300, 450 Series		
	Code: 115 250 1702, 1.5" Long Pilot		
	Type: Non Lock Up	Hub: Ears	
	Diameter: 11.375"	Input Splines: 22	
	Bolt Circle: 12.25"	Three Holes per Pads	
	Mounting: 3 Pads	Pilot Dia: 1.375"	

Ref: MC-4	13", 1.380" Dia. Welded Pilot		
MB28	1972-80 450 Series		
	Code: 100 250 3002		
	Type: Non Lock Up	Hub: Ears	
	Diameter: 13"	Input Splines: 22	
	Bolt Circle: 12.25"	Three Holes per Pads	
	Mounting: 3 Pads	Pilot Dia: 1.375"	

Mercedes 722.2 (K4A-040, K4B-050, K4C-025)


Ref: MC-1	17 Splines, 1.967" Dia. Molded Pilot		
MB25	1968-72 K4A-040 Code: 130 250 0002		
	Type: Non Lock Up	Hub: Ears	
	Diameter: 11.25"	Input Splines: 17	
	Bolt Circle: 9"	Two Holes per Pads	
	Mounting: 3 Pads	Pilot Dia: 1.967"	

Ref: MC29	21 Splines, 1.375" Pilot		
MB29	1968-72 K4C-025 Code: 109 250 1602		
	Type: Non Lock Up	Hub: Slotted	
	Diameter: 11.25"	Input Splines: 21	
	Bolt Circle: 9"	Two Holes per Pads	
	Mounting: 3 Pads	Pilot Dia: 1.380"	

Ref: MC-2	21 Splines, 1.967" Dia. Molded Pilot		
MB26	1968-72 K4C-025 Code: 115 250 0602		
	Type: Non Lock Up	Hub: Slotted	
	Diameter: 11.25"	Input Splines: 21	
	Bolt Circle: 9"	Two Holes per Pads	
	Mounting: 3 Pads	Pilot Dia: 1.967"	


Mercedes 722.3 (W4A-040), 722.5 (W5A-030)

Ref: MC-16	11.25", 1.375" Dia. Molded Pilot		
MB33	1981-Up		
	Codes: 124 250 0002, 124 250 1002		
	Type: Non Lock Up	Hub: Slotted	
	Diameter: 11.25"	Input Splines: 22	
	Bolt Circle: 9"	Two Holes per Pads	
	Mounting: 3 Pads	Pilot Dia: 1.375"	

Ref: MC-6X	11.25", 1.375" Dia. Molded Pilot 1.38" Tall		
MB32	1981-Up 300 Series & Porsche 928		
	Codes: 126 250 0902 (0002, 1302)		
	Type: Non Lock Up	Hub: Slotted	
	Diameter: 11.25"	Input Splines: 22	
	Bolt Circle: 9"	Two Holes per Pads	
	Mounting: 3 Pads	Pilot Dia: 1.375"	

Ref: MC-6	11.25", 1.375" Dia. Pilot 1.5" Tall		
MB30	81-Up 280 & 300 Series, 300DZ Turbo		
	Codes: 126 250 2302, 126 250 1702		
	Codes: 126 250 1502, (0145, 1602)		
	Type: Non Lock Up	Hub: Slotted	
	Diameter: 11.25"	Input Splines: 22	
	Bolt Circle: 9"	Two Holes per Pads	
*Replaces MB31	Mounting: 3 Pads	Pilot Dia: 1.375"	* There are 2 versions of Pads that interchange. See Page 107.

Ref: MC-11	11.25", 1.375" Dia. Welded Pilot, 1.5" Tall		
MB38	1981-Up 280, 300, 300SDL, 300SEL		
	Codes: 126 250 1202, (1402)		
	Type: Non Lock Up	Hub: Slotted	
	Diameter: 11.25"	Input Splines: 22	
	Bolt Circle: 10.75"	Two Drilled Holes per Pads	
	Mounting: 3 Pads	Pilot Dia: 1.375"	


Ref: MC-43	12.25", 1.375" Dia. Molded Pilot, 1" Tall		
MB43	9" Bolt Circle		
	Codes:		
	Type: Non Lock Up	Hub: Slotted	
	Diameter: 12"	Input Splines: 22	
	Bolt Circle: 9"	Two Holes per Pads	
	Mounting: 3 Pads	Pilot Dia: 1.375"	


Ref: MC-10	12", 1.375" Dia. Molded Pilot, 1.21" Tall		
MB37	1981-Up 380, 420SEL, 500		
	Codes: 126 250 1102, (3402)		
	Type: Non Lock Up	Hub: Slotted	
	Diameter: 12.25"	Input Splines: 22	
	Bolt Circle: 10.75"	Two Holes per Pads	
	Mounting: 3 Pads	Pilot Dia: 1.375"	* There are 2 versions of Pads that interchange. See Page 107.


MERCEDES 722.3, 722.5

Mercedes 722.4 (W4A-020)

Ref: MC-12	10" (9" Bolt Circle)		
MB39	1983-Up 190E Gas		
	Codes: 123 250 0202		
	Type: Non Lock Up	Hub: Slotted	
	Diameter: 10"	Input Splines: 19	
	Bolt Circle: 9"	Two Holes per Pads	
Mounting: 3 Pads	Pilot Dia: 1.375"		

Ref: MC-13	11.5" (9" Bolt Circle) (Molded Pilot)		
MB40	1983-Up 190 Diesel		
	Codes: 201 250 0402		
	Type: Non Lock Up	Hub: Slotted	
	Diameter: 11.5"	Input Splines: 19	
	Bolt Circle: 9"	Two Holes per Pads	
Mounting: 3 Pads	Pilot Dia: 1.375"		


Ref: MC-14	11.5" (9" Bolt Circle) (Molded Pilot)		
MB41	1983-Up		
	Codes: 201 250 0102		
	Type: Non Lock Up	Hub: Slotted	
	Diameter: 11.5"	Input Splines: 19	
	Bolt Circle: 9"	Two Holes per Pads	
Mounting: 3 Pads	Pilot Dia: 1.375"		

Ref: MC-15	11.5" (9.25" Bolt Circle) (Molded Pilot)		
MB42	83-Up 190E, 190D Diesel 201 Chassis		
	Codes: 201 250 0402 (0102, 2002)		
	Type: Non Lock Up	Hub: Slotted	
	Diameter: 11.5"	Input Splines: 19	
	Bolt Circle: 9.25"	Two Holes per Pads	
Mounting: 3 Pads	Pilot Dia: 1.375"		

Mercedes 722.6 (W5A-080)

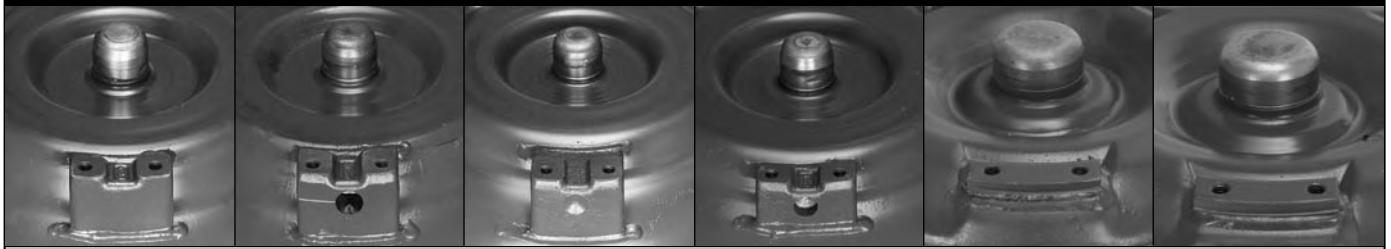
Ref: MC-18	11.375", 9" Bolt Circle		
MB18	1994-Up 320SL		
	Codes: 210 250 0402, 210 250 0502		
	Type: Lock Up	Hub: Slotted	
	Diameter: 11.375"	Input Splines: 22	
	Bolt Circle: 9"	Two Holes per Pads	
	Mounting: 3 Pads	Pilot Dia: 1.375"	

Ref: MC-18A	11.375", 9.375" Bolt Circle		
MB18A	1997-Up CLK320, ML320		
	Codes: 210 250 0702, 210 250 0902, 211 250 0302		
	Type: Lock Up	Hub: Slotted	
	Diameter: 11.375"	Input Splines: 22	
	Bolt Circle: 9.375"	Two Holes per Pads	
	Mounting: 3 Pads	Pilot Dia: 1.375"	

Ref: MC-19	12.25", 10.7" Bolt Circle		
MB19	1997-Up		
	Codes: 140 250 0402		
	Type: Lock Up	Hub: Slotted	
	Diameter: 12.25"	Input Splines: 22	
	Bolt Circle: 10.7"	Two Holes per Pads	
	Mounting: 3 Pads	Pilot Dia: 1.375"	

Ref: MC-19A	12.25", 9.375" Bolt Circle		
MB19A	1997-Up		
	Codes: 140 250 0602, 140 250 0802, 140 250 0902		
	Type: Lock Up	Hub: Slotted	
	Diameter: 12.25"	Input Splines: 22	
	Bolt Circle: 9.375"	Two Holes per Pads	
	Mounting: 3 Pads	Pilot Dia: 1.375"	

Mercedes Pilots



MB18

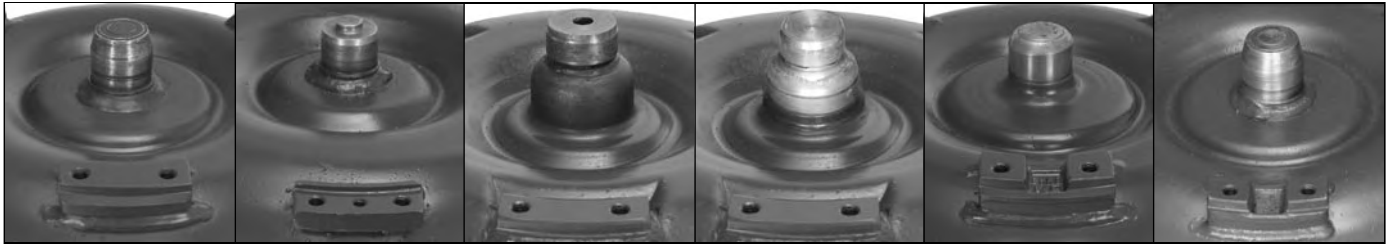
MB18A

MB19

MB19A

MB25

MB26

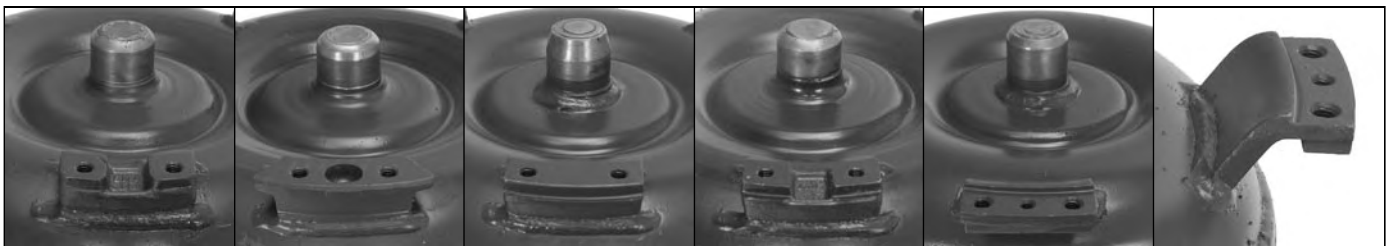


MB27

MB28

MB29 (two versions) MB29

MB30 (two versions) MB30



MB32

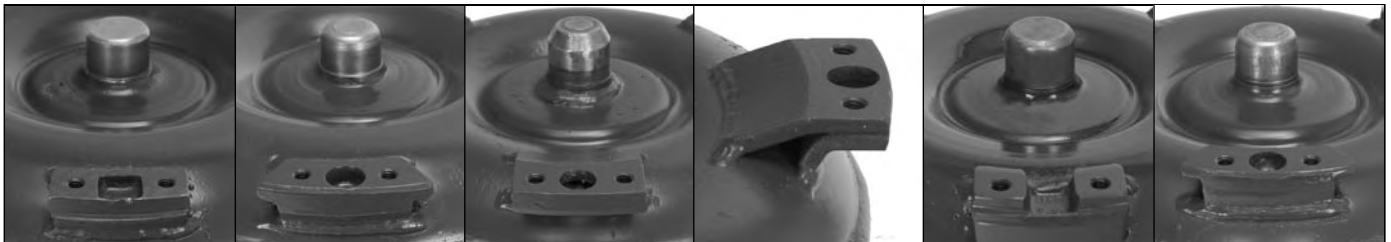
MB33

MB34

MB35

MB36

MB36 (Side)



MB37 (two versions) MB37

MB38

MB38 (Side)

MB39

MB40



MB41

MB42

MB43

Mercedes Benz Converter Codes: The stamped codes on these converters are on the front cover near the weld. The code on this converter is **126 250 09 02 0787**. All of these converters have **250** as the 3rd, 4th & 5th digits. The numbers that ID the converter are the first three digits and the 7th & 8th digits. Thus the code for this converter is **126 09**. (aka 126 250 0902)

